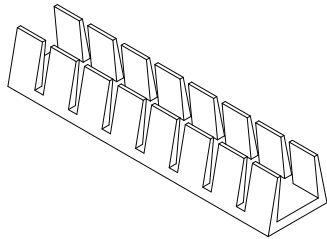


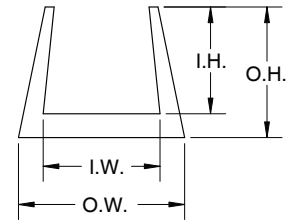
Plastic Continuous Grommet Polyethylene Grommet Strip



RoHS COMPLIANT

Specifications:

Material: Polyethylene (PE)
UL Rating: 94V-2
Color: Natural Clear
 Black(Special Order)



Part Number	Inside Width "I.W." mm [in.]	Outside Width "O.W." mm [in.]	Inside Height "I.H." mm [in.]	Outside Height "O.H." mm [in.]	Panel Thickness Range mm [in.]	Package
PCG-06	0.6 [0.024]	2.6 [0.102]	3.8 [0.150]	4.8 [0.189]	0.4 [0.016] - 0.6 [0.024]	Standard: 10m [33 Ft.] Special Order Only: 33m [100 Ft.] Spool
PCG-08	0.8 [0.031]	2.8 [0.110]	3.8 [0.150]	4.8 [0.189]	0.6 [0.024] - 0.8 [0.031]	
PCG-10	1.0 [0.039]	4.0 [0.157]	3.9 [0.154]	5.3 [0.209]	0.9 [0.035] - 1.0 [0.039]	
PCG-12	1.2 [0.047]	3.7 [0.146]	3.9 [0.154]	5.4 [0.213]	1.1 [0.043] - 1.2 [0.047]	
PCG-16	1.6 [0.063]	4.5 [0.177]	3.9 [0.154]	5.3 [0.209]	1.3 [0.051] - 1.6 [0.063]	
PCG-20	2.0 [0.079]	5.0 [0.197]	3.9 [0.154]	5.3 [0.209]	1.7 [0.067] - 2.0 [0.079]	
PCG-24	2.4 [0.094]	5.2 [0.205]	3.9 [0.154]	5.3 [0.209]	2.0 [0.079] - 2.4 [0.094]	
PCG-30	3.0 [0.118]	6.0 [0.236]	5.0 [0.197]	6.5 [0.256]	2.4 [0.094] - 3.0 [0.118]	
PCG-40	4.0 [0.157]	7.2 [0.283]	4.3 [0.169]	6.5 [0.256]	3.0 [0.118] - 4.0 [0.157]	

Nylon Round Hole Plug



RoHS COMPLIANT

Specifications:

Material: Nylon 6/6
UL Rating: 94V-2
Color: Black

Fig. 1

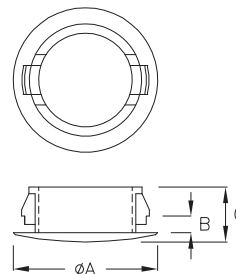
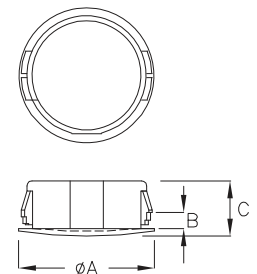


Fig. 2



Part Number	Max. Chassis Thk., mm [in.]	Hole Dia. in Chassis, mm [in.]	Cap Dia. "A", mm [in.]	Ref. "B", mm [in.]	Ref. "C", mm [in.]	Standard Package
Refer to Fig. 1 for Drawing						
PCP-M-4	1.6 [0.063]	4.7-4.9 [0.185-0.193]	6.0 [0.236]	1.8 [0.071]	5.2 [0.205]	2000
PCP-M-5	1.0 [0.039]	5.0-5.0 [0.195-0.197]	7.5 [0.295]	1.3 [0.051]	5.7 [0.224]	
PCP-M-6	1.6 [0.063]	6.3-6.5 [0.248-0.256]	7.6 [0.299]	1.8 [0.071]	5.6 [0.220]	
PCP-M-6A	1.6 [0.063]	6.2-6.5 [0.244-0.256]	8.0 [0.315]	1.9 [0.073]	8.0 [0.315]	
PCP-M-7	1.6 [0.063]	7.0-7.1 [0.276-0.280]	11.0 [0.433]	1.9 [0.075]	7.0 [0.276]	
PCP-M-8	1.6 [0.063]	7.6-8.0 [0.299-0.315]	9.5 [0.374]	1.8 [0.071]	6.0 [0.236]	
PCP-M-9	1.2 [0.047]	9.5-9.6 [0.374-0.378]	13.0 [0.512]	2.0 [0.079]	6.5 [0.256]	1000
PCP-M-10	1.4 [0.055]	9.6-10.0 [0.378-0.394]	13.0 [0.512]	1.8 [0.071]	6.0 [0.236]	
PCP-M-11A	1.4 [0.055]	11.5-11.6 [0.451-0.455]	18.6 [0.732]	2.0 [0.079]	7.0 [0.276]	
PCP-M-13	2.1 [0.083]	12.7-13.0 [0.500-0.512]	17.0 [0.669]	2.3 [0.091]	8.0 [0.315]	
PCP-M-16	2.0 [0.079]	15.9-16.0 [0.626-0.630]	20.0 [0.787]	2.3 [0.091]	7.7 [0.303]	500
Refer to Fig. 2 for Drawing						
PCP-M-19	3.2 [0.126]	18.9-19.0 [0.744-0.748]	23.5 [0.925]	3.5 [0.138]	10.5 [0.413]	500
PCP-M-22	3.0 [0.118]	21.9-22.0 [0.862-0.866]	26.0 [1.024]	3.4 [0.134]	9.6 [0.378]	
PCP-M-25	3.2 [0.126]	25.4-25.6 [1.000-1.008]	28.0 [1.102]	4.0 [0.157]	12.7 [0.500]	200
PCP-M-28A	3.5 [0.138]	28.3-28.4 [1.114-1.118]	32.0 [1.260]	3.9 [0.154]	13.1 [0.516]	
PCP-M-30	3.2 [0.126]	30.5-30.6 [1.201-1.205]	34.0 [1.339]	4.0 [0.157]	13.0 [0.512]	
PCP-M-32	2.2 [0.087]	32.0-32.1 [1.260-1.264]	35.7 [1.406]	2.6 [0.102]	13.0 [0.512]	

all dimension units in millimeter (mm) unless noted otherwise

www.vaisis.com | P: 626-795-6696 | F: 626-795-6896 | Email: sales@vaisis.com

Vaisis